

MINIATURE PHOTOELECTRIC SMOKE ALARM



MODEL:
FSD001



EN14604:2005+AC:2008
DoP n° xxxxxx

MODEL:
FSD002



EN14604:2005+AC:2008
DoP n° xxxxxx

Main Features :

- Photoelectric Sensor for Slow Smouldering Fires
- 5 Years Battery Life (FSD001)
- 10 Years Battery Life (FSD002)
- Power & Alarm Test Button
- Hush Feature
- 30 Days Low Battery Warning
- Loud 85Db Alarm Signal
- Tamperproof Locking Pin help deter children and others from removing the alarm from the mounting plate.
- Cannot be installed without battery
- Easy Installation

This instruction leaflet contains important information on the correct installation and

operation of your smoke alarm. Read this leaflet fully before attempting installation and retain for future reference.

SPECIFICATION

Power Source : 3Vdc Lithium battery
 Operation Temperature : 0°C-40°C
 Ambient Humidity : 10%-90% RH (non-condensing)
 Horn Level : 85 Decibels at 3 metres
 Battery Life & Type : **5 years for FSD001**
 Battery replaceable
 (Battery type: CR2)
10 years for FSD002
 Battery sealed-in
 (Battery type: CR17335, CR123A)

GENERAL

- The Stand Alone Smoke Alarm is designed to provide early warning of the presence of fire by emitting a sound signal.
- Smoke alarm can be assumed to cover a 10m x 10m area.
- Its 85dB sound alarm is powerful enough to wake you up in case of emergency.
- It ensures you'll gain precious minutes to escape before the fire's propagation.
- It detects smoke from wood, cotton, plastic and hydrocarbon based fires.
- However, this device is effective only when located, installed and maintained in compliance with the instructions described in this manual.
- This device does not detect gas, heat or flames.
- Carefully read all the instructions before installing and using the device.
- Follow scrupulously the following safety instructions and prescriptions:
 - Do not modify the device.
 - Never repair the device yourself.
 - Return it to your dealer for any repairs.
- The alarm's sound is higher than 85 dB, repeated exposure to such a sound intensity may damage hearing.

CONFORMITY

CE marking

The CE marking on this product indicates its conformity with the applicable European directives, and more particularly to the harmonised specifications of the EN14604:2005 + AC:2008 standard with regard to rule 305/2011 relative to construction products.

LOCATING THE SMOKE ALARM

Install your Stand Alone Smoke Alarm as set out in the EN 14604: 2005 + AC:2008 standard.

This smoke alarm is a single station photoelectric alarm and should NOT be connected to other smoke alarms.

If your dwelling is on a single storey, for minimum protection you should fit an alarm in the hallway between the living areas (incl. Kitchens) and sleeping areas. Place it as near to the living areas as possible and ensure the alarm is audible when the bedrooms are occupied. See Figure 1 for example.

If your dwelling is multi-storey, for minimum protection one alarm should be fitted at the bottom of the staircase with further alarms fitted on each upstairs landing. This includes basements but excludes crawl spaces and unfinished attics. See Figure 2 for example.

NOTE: For maximum protection an alarm should be fitted in every room (except kitchen, bathroom and garage).
DO NOT FIT AN ALARM IN THE KITCHEN or BATHROOM, as cooking fumes or steam may trigger the alarm.
DO NOT FIT ALARM IN A GARAGE, as exhaust fumes are likely to set it off.

FIGURE 1 - SINGLE STOREY DWELLING

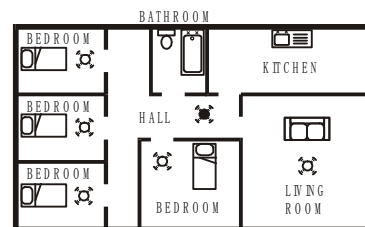
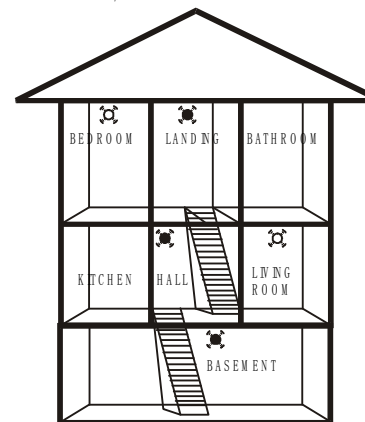


FIGURE 2 - 2/3 STOREY DWELLING



KEY
 MAXIMUM PROTECTION

Areas to be avoided include the following :-

- Situations where the temperature may fall below 0°C or rise above 40°C
- Humid areas such as bathrooms, kitchens, shower rooms where the relative humidity may exceed 90%
- Near a decorative object, door, light fitting, window molding etc., that may prevent smoke or heat from entering the alarm.
- Fume filled environments such as garages. Exhaust gases may cause false alarms.
- Adjacent to or directly above hot components such as radiators or wall vents that can affect the direction of air currents.
- In very dusty or dirty environments such as workshops.
- Locate unit at least 1.5m away for fluorescent light fittings as electrical "noise" and/or flickering may affect the unit. Do not wire into the same circuit as fluorescent lights or dimmers.
- Do not locate in insect infested areas. Insects and contamination on the alarm sensor can increase its response time.

POSITIONING THE SMOKE ALARM

Ceiling Mounting

As hot smoke rises and spread out, it is advisable to mount on a ceiling in a central position. Avoid areas where there is no air circulation. E.g. Corners of rooms and keep away from items which may prevent the free flow of air. Place the unit at least 30cm from and light fitting or decorative object which might obstruct smoke / heat entering the alarm. Keep at least 1 metre away from walls. See Figure 3i.

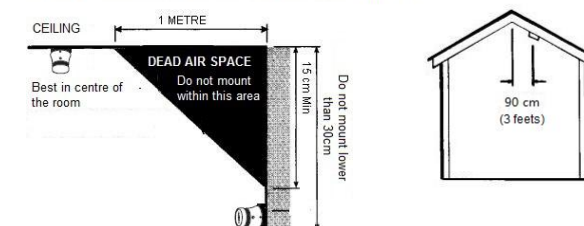
Wall Mounting

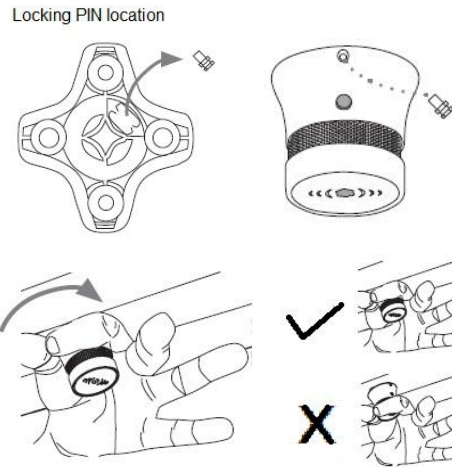
Do not mount tight into the corners. Put the top edge of your smoke alarm minimum 15cm and maximum 30cm from the ceiling. See Figure 3i

On a Sloping Ceiling

In areas with sloping or peaked ceilings install your Smoke Alarm 90cm from the highest point measured horizontally because "dead air" at the apex may prevent smoke from reaching the unit. See Figure 3ii

Figure 3i - Positioning the smoke detector Figure 3ii





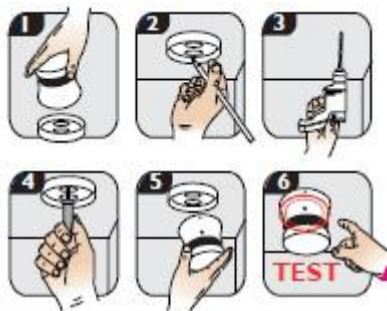
INSTALLING THE SMOKE ALARM

This smoke alarm is powered by a battery and requires no additional wiring.

- Having established the mounting location ensure that there is no electrical wiring or pipe work in the area adjacent to the mounting surface.
- Remove the locking PIN from the fastening bracket.
- Draw a 50mm horizontal line where you wish to install the alarm.
- Align the fastening bracket on the two screw holes along the line.
- Draw a mark in each hole to mark the location of the drilled holes.
- During drilling, move the detector away to prevent dust from penetrating it.
- Insert wall plugs into the drilled holes.
- Screw the 2 screws supplied to fasten the bracket.
- For the FSD001: Insert the battery into the battery compartment while ensuring the polarities are correct. The red LED flashes once.

Caution! The detector cannot be fastened if the battery is not installed properly. Lithium batteries may explode when connected improperly.

- For the FSD002: The sealed battery requires no particular handling
- Align the tabs on the fastening bracket with the detector and clip it into the bracket.
- Turn the detector clockwise to fit it in place.
- Place the locking pin onto the detector. (This feature is used to help deter children and others from removing the alarm from the mounting plate.)
- Press the test button to check if the detector is correctly working



OPERATING YOUR SMOKE ALARM

Once the smoke alarm has been installed a small red indicator light (LED), positioned under the test button, should flash about every 48 seconds in normal operation.

If smoke is detected the unit will emit 3 long beeps pulsating alarm with red LED flash until the air is clear.

TESTING YOUR SMOKE ALARM

It is recommended that you test your smoke alarm once a week to ensure the detector is working correctly.

- To check proper battery charging, press the test button, the red LED flashes and the alarm is activated by emitting 5 beeps, then stops. If the alarm is not activated, refer to the Maintenance and Guarantee paragraphs.
- Never use a flame to test the smoke detector as this may start a fire. The test button ensures accurate checking of the alarm's operation, as required by certification laboratories.

After installation and after reoccupation of the dwelling following a vacation etc, check all your alarms.

COMMON CAUSES AND AVOIDANCE OF FALSE ALARMS

The Smoke Alarm may be triggered by steam, condensation, normal smoke or fumes. Small insects getting into the smoke alarm chamber may cause intermittent alarms.

When not tested, the device emits a sound signal when it detects smoke or particles in the air. This

may also be the battery fault signal. The sound signal reports a potential hazard requiring immediate attention. The alarm may be activated by smoke from the kitchen or a dust cloud. In this case, ventilate the direct environment around the detector until ambient air is purified.

Keep away from the sources to avoid nuisance alarms. (See "Areas to be avoided" in the "Positioning the smoke alarm" section.)

Hush or Silence Feature

This Smoke Alarm has a built-in Hush or Silence feature incorporated into the Test button.

If cooking or other non-hazardous sources cause the unwanted alarm, it can be temporarily silenced by depressing the test button and holding for approximately 3 seconds. The alarm will enter a dormant period for 10 minutes. The red LED will flash every 8 seconds to indicate the sensitivity is reduced.

NOTE - If the smoke density increases severely during this period (i.e. from a fire), the LED flashes 4 times then the alarm is re-activated: 5 long beeps with the flashing LED.

After about 10 minutes, the detector returns to a normal level of sensitivity. The TEST function remains operational when the detector is in the Hush /Silence mode.

LOW BATTERY WARNING

When the battery is at the end of its life, the smoke detector will emit a short fast 'beep' every 48 seconds. This low voltage warning will be given for at least 30 days.

ACTION IN THE EVENT OF A FALSE ALARM

- If there is a false alarm, press the test button to activate the silence feature which will be last for 10 minutes
- Check whether there are some sources of smoke or fumes. You should get your family into a safe place before your investigation.
- If there are frequent nuisance/ false alarms it may be necessary to re-locate the device. If cleaning the alarm does not correct the problem it can be returned to the place where you bought it.

IN THE EVENT OF FIRE

- Leave the building as quickly as possible. Check room doors for heat or smoke. Do not open a hot door. Use an alternate escape route. Crawl along the floor, if

possible, through a wet cloth or hold your breath to avoid breathing toxic fumes.

- Meet at a pre-arranged meeting place outside the dwelling and check everybody is there.
- Call the Fire Brigade from outside the building immediately. The brigade should be summoned regardless of the size of the fire and regardless of whether there is a facility for transmission of alarms to a remote manned centre.
- Do not go back inside a burning building and wait for the Fire Brigade to arrive.

MAINTAINING YOUR SMOKE ALARM

Clean your smoke alarm regularly to prevent dust build up. This can be done using a vacuum cleaner with the brush attachment. Clean gently around the front grilled section and sides. Never use water, cleaners or solvents since they may damage the smoke alarm.

Changing the battery (For FSD001 model ONLY). Change the unit's battery when the battery low warning signal sounds every 48 seconds. The Alarm runs for about 30 days from the activation of this signal.

NOTE: For FSD002, the battery was sealed inside the unit. No installation of battery is necessary. The unit must be replaced if it emits low battery warning signal

If the alarm fails to operate currently, please send back to the address of manufacturer shown on the back label of the detector.

NOTE: THE APPARATUS SHALL NOT BE EXPOSED TO DRIPPING OR SPLASHING.

IMPORTANT SAFEGUARDS

Installation of your smoke alarm is only one step in your safety plan. Other important steps should be taken to further improve your safety:-

- Install the smoke alarm properly, following this instruction leaflet
- Test your smoke alarm weekly
- Replace the battery immediately once depleted
- Do not smoke in bed
- Keep matches & lighters away from children
- Store flammable materials in a proper manner and never use them near naked flames or sparks
- Maintain emergency equipment such as Fire Extinguishers, Fire Blankets etc and ensure all occupants know how to use them correctly.
- Plan an escape route/s from your building in advance and ensure all occupants are aware of them. Re-enforce this awareness periodically through-out the year.
- Make sure escape routes remain free of any obstructions.

WARNING!

IF THERE IS ANY QUESTION AS TO THE CAUSE OF AN ALARM IT SHOULD BE ASSUMED THAT THE ALARM IS DUE TO AN ACTUAL FIRE AND THE DWELLING SHOULD BE EVACUATED IMMEDIATELY.

THIS PRODUCT IS A SEALED UNIT AND CANNOT BE REPAIRED – IF THE UNIT IS TAMPERED WITH IT WILL INVALIDATE THE GUARANTEE. IF THE UNIT IS FAULTY PLEASE RETURN IT TO YOUR ORIGINAL SUPPLIER WITH YOUR PROOF OF PURCHASE.

YOUR SMOKE ALARM GUARANTEE

These Smoke Alarms are guaranteed to be free from defects in materials and workmanships under normal use and service for a period of five years, (except the battery) from date of purchase. The company will not be obligated to repair or replace parts which are found to be in need of repair because of misuse, damage or alterations occur after the date of purchase. Send the Smoke Alarm with proof of purchase, postage and return postage prepaid, to local distributor. The liability of the company arising from the sale of this Smoke Alarm shall not in any case exceed the cost of replacement of Smoke Alarm and in no case shall the company be liable for consequential loss or damages resulting from the failure of the Smoke Alarm.

RECYCLING

- The unit is mainly composed of recyclable materials.
- Do not discard the packaging, the unit and content of the package with household waste, but in compliance with currently enforced regulations.
- In compliance with the Directive 2002/96/CE relative to waste from electrical and electronic equipment (WEEE), this product must be recycled.
- Eco-organisme : Ecologic
- For more information, call the dealer or local authority in charge of waste management.



- The documentation supplied with this product must be kept throughout its lifetime.
- Do not reproduce, disclose or translate this document without prior authorization from FORLIFE.
- Texts and photos non contractual.